



## HINCOL Emulsion SS 1

HINCOL Emulsion SS 1 is specially designed oil based Bitumen Emulsion with low viscosity, extended setting time and stability with cement that makes it an ideal product for Prime Coat application. It is black in colour and is a free flowing liquid at ambient temperature. HINCOL Emulsion SS 1 is manufactured strictly as per IS 8887:2004.

### Typical Properties

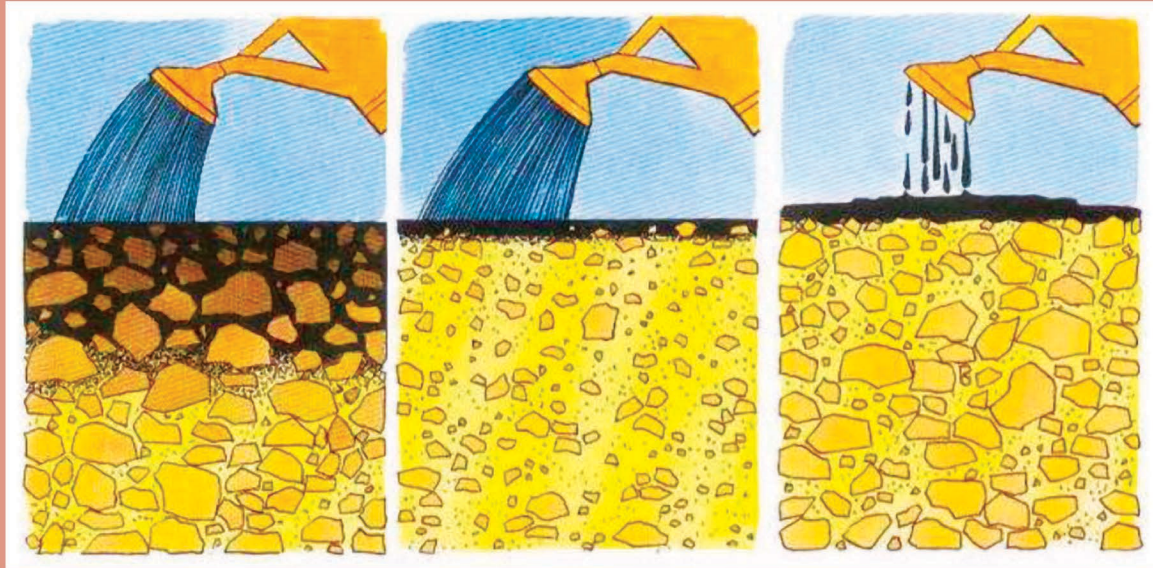
| Properties                                    | HINCOL Emulsion SS 1 |
|---|----------------------|
| 1. Residue on 600 Micron IS Sieve, % Max      | 0.05                 |
| 2. Viscosity @ 25°C (Saybolt Viscometer), sec | 20-100               |
| 3. Setting Time, Hrs                          | Less Than 48         |
| 4. Binder Residue by Evaporation, % Min       | 50                   |
| 5. Coagulation at Low Temperature             | NIL                  |

### Advantages

- Superior penetration into miniature pores of sub base
- Compatible with portland cement
- Low temperature curing allows the binder to penetrate into sub base
- Prevent ingress of underground water into the pavements by plugging the capillary voids
- Enhances structural strength by strongly binding loose aggregates
- Easy to apply and hassle free
- Prevent Raveling and Rutting
- Environment friendly

### Application

HINCOL Emulsion SS 1 is ideally suited for Prime Coating on WMM/WBM surfaces and it has the ability to penetrate 8-10 mm deep into low porous WMM surface.



*The emulsion must penetrate the first few millimeters of the layer very quickly*

*Prime coat will not succeed if the emulsion is of a viscosity that does not correspond to the gravel or has too high breaking speed*

### Recommended Rate of Application

| Type of Surfaces                               | Viscosity of Primer @60°C (Centistokes) | Quantity in Kg/10 m <sup>2</sup> Area |
|--|---|---------------------------------------|
| 1. Low Porous (WMM/WBM)                        | 30 - 60                                 | 6 to 9                                |
| 2. Medium Porous (Cement Stabilized Soil Base) | 70 - 140                                | 9 to 12                               |
| 3. High Porous (Gravel Base)                   | 250 - 500                               | 12 to 15                              |

### To Ensure Best Results

- Use without diluting Bitumen Emulsion with any solvent
- Use at ambient temperature
- Roll the Bitumen Emulsion drums 5 times before using

### Availability

HINCOL Emulsion SS 1 is available in

- Bulk
- RC Drums 200 Kg
- MS Drums 200 Kg
- HDPE Drums 200 Kg

