



# HINPRIME Emulsion SS1 (ASTM)

## FAST & DEEP PENETRATION

A pavement is only as good as its foundation - its base. Traditionally, road bases have been prepared for surfacing with prime coat to protect the granular base during construction and reduce dust. Prime seals stabilize the top part of aggregate course, waterproof the surface, provide a good bonding between underlying base and hot mix asphalt overlays to extend the service life of the road. The conventional primer does not penetrate the dense wet mix macadam.

### **HINPRIME EMULSION SS1 (ASTM): THE BEST PERFORMING PRIME COAT FOR YOUR ROAD**

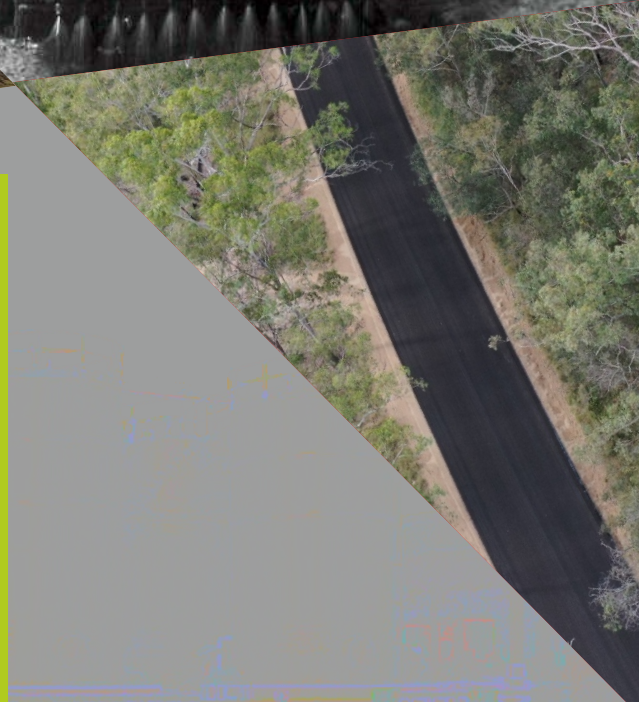
HINPRIME Emulsion SS1 (ASTM) is a special cationic bitumen emulsion. It is used to waterproof and protect the granular road base of the pavement by providing high penetration power on most of the aggregate base course surfaces. HINPRIME Emulsion SS1 (ASTM) can also be used as dust control on un-sealed roads, preventing workers and surroundings from breathing dust particles generated by road traffic.

At site, HINPRIME Emulsion SS1 (ASTM) is a safe emulsion that contributes to significant reduction on VOCs exposure impacting on the environment. It has shorter curing time and allows pavement overlay operations to commence in couple hours after spraying.

### **HINPRIME EMULSION SS1 (ASTM) KEY BENEFITS:**

HINPRIME Emulsion SS1 (ASTM) is a liquid form of bitumen in which a substantial amount of bitumen is suspended in a finely divided condition in an aqueous medium; bitumen is the dispersed phase and water is the continuous phase. It is designed to exceed the functional requirements of respective applications.

	<b>BITUMEN Emulsion SS1 ASTM</b>	<b>HINPRIME Emulsion SS1 (ASTM)</b>
Curing time	★★★★★	★★★★★
Penetration time	★	★★★★★
Penetration depth	★	★★★★★
Safety	★★★★★	★★★★★



## ADVANTAGES:

- Excellent penetration into miniature pores of sub bases.
- Extended breaking.
- Easy spray.
- Penetrate the cracks & crevices and impart strength to the layers.
- Bonds well to cool, damp substrates/surfaces.
- Highly adhesive.
- Prevent permeability of atmospheric air to the bottom layer.
- Bind loose aggregates together strongly.

## APPLICATIONS:

Prime Coat: Application of HINPRIME SS1 (ASTM) to an absorptive surface, designed to penetrate, bond and stabilize this existing surface and to promote adhesion between it and the construction course that follows.

Recommended rate of application is 6 to 9 Kg per 10 m<sup>2</sup>.

## SPECIFICATIONS:

*Sieve test, % Max	0.1
Viscosity by Sabolt Furol at 25 C, sec	20 - 100
Storage stability after 24 Hr, % Max	1
Particle charge	Positive
Cement Mixing Test, % Max	2
Miscibility with water	No coag
Tests on residue:	
1. Penetration 25C	100 - 250
2. Ductility 25C, cm, Min	40
3. Solubility in Trichloro ethylene % Mass, Min	97.5%
4. Residue, Min	57

## APPLICATION RATE:

Type of Surface	Rate of Spray (Kg/m <sup>2</sup> )
WMM / WBM	0.7 - 1.0
Stabilised Soil Base	0.9 - 1.2



## HINDUSTAN COLAS

A JV OF HINDUSTAN PETROLEUM CORPORATION LTD. & COLAS SA, FRANCE

HINCOL HOUSE, B-601, 6<sup>th</sup> Floor, Marathon Futorex, N.M. Joshi Marg, Lower Parel, Mumbai 400 013, India.

Phone: +91-22-2302 3250 | Fax: +91-22-2302 3299